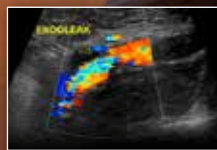


~8th Annual~  
Vascular  
**Ultrasound**  
Symposium

Saturday | May 17, 2014



PENNSSTATE HERSHEY



Heart and Vascular  
Institute



Sheraton Harrisburg Hershey  
4650 Lindle Road • Harrisburg, PA 17111

A continuing education of Penn State College of Medicine



## Purpose/Audience

This program will provide an educational opportunity for physicians, sonographers, nurses, and other health-care professionals to increase their knowledge about vascular diagnostic ultrasound and its role in the care of patients with arterial and venous disease. It will provide an open forum for vascular health-care professionals to learn and discuss best practices and emerging trends.

## Objectives

Upon completion of this activity, participants should be able to:

- Recognize the variety of pathology that can be observed with abdominal vascular ultrasound imaging
- Understand the physiology and sonographic patterns of vascular collateral flow
- Discuss historical trends and emergence of new technologies in vascular diagnostic testing

## Accommodations

Accommodations are the responsibility of the program participant. A list of Hershey area lodging is available upon request or online at [pennstatehershey.org/web/guest/patientcare/patientvisitorinformation/lodging](http://pennstatehershey.org/web/guest/patientcare/patientvisitorinformation/lodging)

This publication is available in alternative media on request.

The Pennsylvania State University is committed to the policy that all persons shall have equal access to programs, facilities, admission, and employment without regard to personal characteristics not related to ability, performance, or qualifications as determined by University policy or by state or federal authorities. It is the policy of the University to maintain an academic and work environment free of discrimination, including harassment. The Pennsylvania State University prohibits discrimination and harassment against any person because of age, ancestry, color, disability or handicap, genetic information, national origin, race, religious creed, sex, sexual orientation, gender identity, or veteran status and retaliation due to the reporting of discrimination or harassment. Discrimination, harassment, or retaliation against faculty, staff, or students will not be tolerated at The Pennsylvania State University. Direct all inquiries regarding the Nondiscrimination Policy to the Affirmative Action Director, The Pennsylvania State University, 328 Boucke Building, University Park, PA 16802-5901; tel 814-863-0471/TTY. U.Ed. MED B5343-14-Y

# Credit

- **6.5 AMA PRA Category 1 Credit(s)<sup>™</sup>**
- **Sonographers and Nurses will receive a certificate of participation in 6.5 hours of approved continuing medical education credit**

Penn State College of Medicine is accredited by the Accreditation Council for Continuing Medical Education to provide continuing medical education for physicians.

Penn State College of Medicine designates this live activity for a maximum of **6.5 AMA PRA Category 1 Credit(s)<sup>™</sup>**. Physicians should claim only the credit commensurate with the extent of their participation in the activity.

### **Sonographers using AMA credit:**

Sonographers will receive a certificate from Penn State College of Medicine verifying their participation in **6.5 hours of approved continuing medical education**. Continuing education activities which are approved by accredited institutions of higher education and that are relevant meet the requirements of mandatory continuing education.

### **Nurses using AMA credit:**

Nurses will receive a certificate from Penn State College of Medicine verifying their participation in **6.5 hours of approved continuing medical education**. Continuing education activities which are approved by accredited institutions of higher education and that are relevant to patient care or professional nursing meet the requirements of mandatory continuing education for registered nurses in Pennsylvania, as required by the Pennsylvania State Board of Nursing. The Board of Nursing recommends that nurses retain their certificates for a period of at least five years. Additional information is available through the State Board of Nursing at: [dos.state.pa.us/nurse](https://dos.state.pa.us/nurse).

It is our policy to ensure balance, independence, objectivity, and scientific rigor in all of our sponsored educational programs. Faculty and course directors have disclosed relevant financial relationships with commercial companies, and Penn State has a process in place to resolve any conflict of interest. Complete faculty disclosure will be provided to program participants at the beginning of the activity.

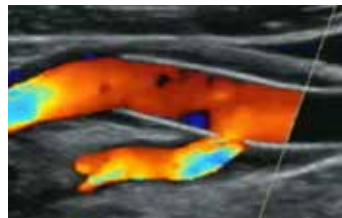


~Keynote Speaker~

## Phillip Bendick

PhD, RVT, FSDMS, FSVU

Phillip Bendick, PhD, is a consultant in vascular ultrasound and non-invasive vascular testing. He is the Technical Director of the Peripheral Vascular Diagnostic Center, and Director of Surgical Research at William Beaumont Hospital in Royal Oak, Michigan. He has been active in research and the clinical application of vascular ultrasound since 1974. Dr. Bendick has authored or co-authored over 150 papers in peer reviewed journals and 15 book chapters. He was a founding board member of the Intersocietal Commission for the Accreditation of Vascular Laboratories (ICAVL), and has served as an Item Writer for the ARDMS, on the Board of Directors of the Joint Review Commission for Education in Diagnostic Medical Sonography (JRC-DMS), as a member of the Board of Governors of the American Institute of Ultrasound in Medicine (AIUM), and a director of the Education Foundation for the Society of Diagnostic Medical Sonographers (SDMS). He is presently Editor-in-Chief of the Journal of Diagnostic Medical Sonography.



# Agenda

7:45 Opening Remarks/Introductions

8:00 **Ultrasound in Vascular Interventions:**

**How, When and Why**

**David Han, MD, FACS, RPVI\*†**

Vascular Surgery Division

8:45 **Imaging Endovascular Repair (TVAR, EVAR, PEVAR)**

**Robert Atnip, MD, RVT, RPVI\*†**

Vascular Surgery Division

Medical Director, Vascular Diagnostics

9:45 Break

10:00

**Transcranial Doppler (TCD):**

**Current Common Clinical Indications and Use**

**Raymond Reichwein, MD†**

Associate Professor of Neurology

Comprehensive Stroke Center Co-Director

11:00

**Historic Baggage in Vascular Testing**

**Phillip Bendick, PhD, RVT, FSDMS, FSVU**

Vascular Ultrasound Consultant

12:00

Lunch

1:00

**Hands on Imaging – Hershey Medical Center**

**Vascular Diagnostics**

Staff

*Visit each station to learn about pathology and imaging techniques.*

2:00

**Emerging Trends in Vascular Disease Treatment**

**Faisal Aziz, MD, RVT, RPVI\*†**

Vascular Surgery Division

2:45

Break

3:00

**Sonographer's Jeopardy:**

**Category – Kidney and Liver Transplants**

**Marsha Neumyer, BS, RVT, FSDMS, FSVU, FAIUM**

International Director, Vascular Diagnostic Educational Services

4:00

Adjourn/Announcements

\* Penn State Hershey Heart and Vascular Institute

† Penn State Milton S. Hershey Medical Center; Penn State College of Medicine

# Fee

Includes: Instruction • Handout Materials • Lunch • Refreshments

- Sonography Students—\$45/person

## Early bird registration before or on April 11:

- Physicians—\$99/person
- Sonographers/Other Health Professionals—\$69/person

## Registration after April 11:

- Physicians—\$119/person
- Sonographers/Other Health Professionals—\$89/person

You can pay for your registration by check, request to bill employer or VISA, MasterCard or American Express.

# Cancellation Policy

## Cancellations received later than:

- May 9, 2014 will incur a \$25 processing fee.

## No refunds after:

- May 14, 2014—substitutes are accepted at any time.

The University reserves the right to cancel or postpone any course or activity because of insufficient enrollment or other unforeseen circumstances. Please provide a cell phone number so we can reach you in the event of last-minute changes or cancellation. If a program is canceled or postponed, the University will refund registration fees but cannot be held responsible for any related costs, charges, or expenses, including cancellation/change charges assessed by airlines or travel agencies. Preregistered participants will be notified if a program is filled or canceled.



# Registration

Register online, by fax, or by mail. Registrations will be confirmed by email upon receipt of payment, authorization to bill, or a credit card guarantee.

If you do not receive a confirmation within two weeks, call 717-531-6483 to confirm your registration. Walk-ins and late registrations will be accepted if space is available.

**Call** 717-531-6483 **Fax** 717-531-5604 **Email** [ContinuingEd@hmc.psu.edu](mailto:ContinuingEd@hmc.psu.edu)

**Mail** Registrar, Penn State Hershey Continuing Education, G220  
P. O. Box 851, Hershey, PA 17033



*Register Online Today!*

[pennstatehershey.org/HVIContinuingEd](http://pennstatehershey.org/HVIContinuingEd)

~8th Annual~  
**Vascular Ultrasound Symposium**

Saturday • May 17, 2014 • B5343-14-Y

Name (First Name, MI, Last Name)

Male  Female

Degree/Credentials

Email (Print legibly. We use this for confirmation/registration status/program materials.)

Home Address

City

State

Zip Code

Daytime Phone

Cell Phone (For last-minute change/cancellations)

Hospital or Organization

Specialty/Position

Address (HMC/COM employees—dept. name/mail code)

City

State

Zip Code

Special Needs (Dietary, access, etc.)

## Fee

Sonography Students—\$45/person

Students must include a letter verifying student status

### Early bird registration before or on April 11:

Physicians—\$99/person

Sonographers/Other Health Professionals—\$69/person

Please note: The Continuing Education Office must receive payment by April 11 for you to be an early bird registrant.

### Registration after April 11:

Physicians—\$119/person

Sonographers/Other Health Professionals—\$89/person

### Indicate method of payment:

Check enclosed—payable to Penn State

Bill sponsoring organization—letter of authorization is attached

Fee for HMC/COM employee—bill department

Cost center/budget #: \_\_\_\_\_

Charge my:

VISA

MasterCard

AMEX

Account Number

Exp. Date

Cardholder's Signature

THE PENNSYLVANIA STATE UNIVERSITY  
PENN STATE MILTON S. HERSHEY MEDICAL CENTER  
DEPARTMENT OF CONTINUING EDUCATION G220  
P.O. BOX 851  
HERSHEY, PA 17033-0851

Nonprofit Org.  
U.S. Postage  
PAID  
PA State University  
M.S. Hershey Med. Ctr.



~8th Annual~  
**Vascular  
Ultrasound  
Symposium**  
Saturday | May 17, 2014



**Register Online Today!**  
[pennstatehershey.org/HVIContinuingEd](http://pennstatehershey.org/HVIContinuingEd)